



APS



Mays Cluster  
Public Hearing #2  
February 23, 2017

[www.atlantapublicschools.us/schoolchanges](http://www.atlantapublicschools.us/schoolchanges)

Revised 02/23/2017

# Agenda

---

**Welcome & Introductions**

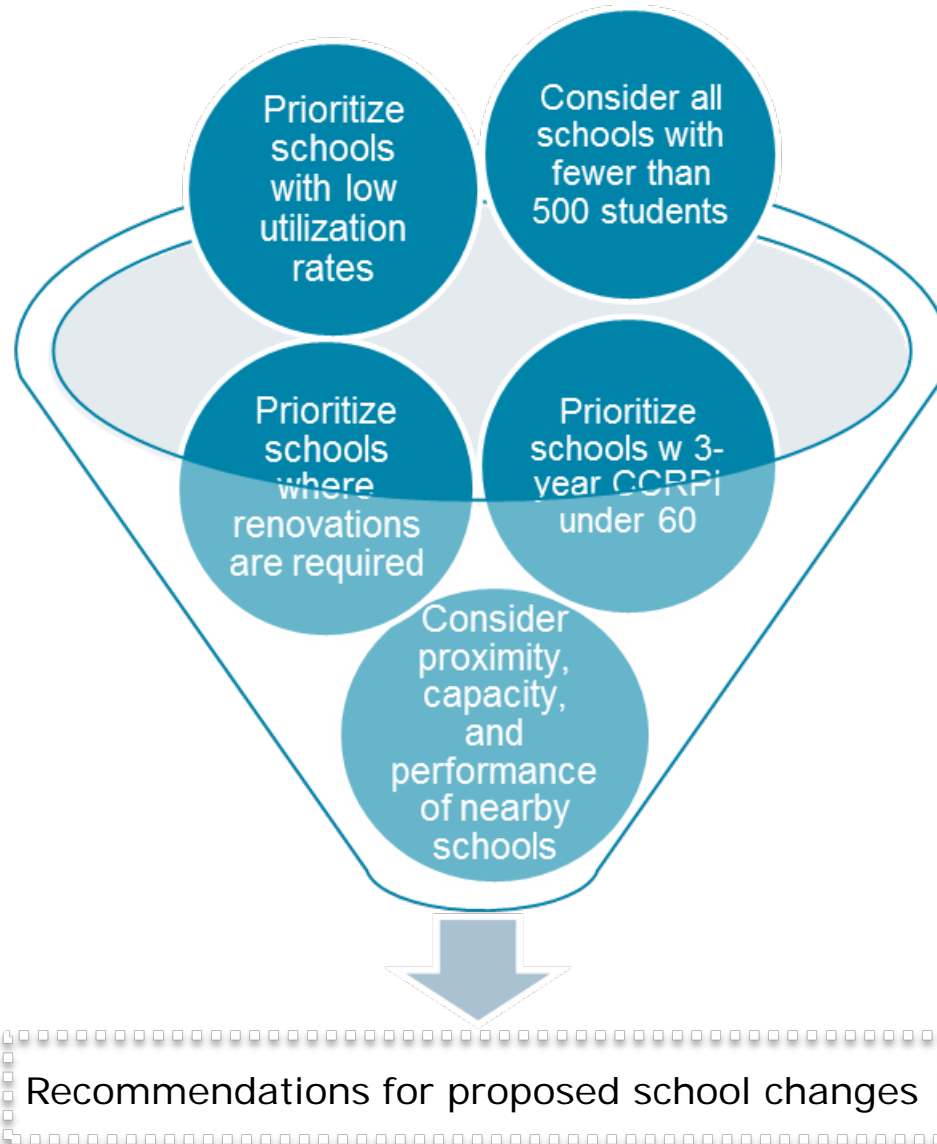
**Purpose of Meeting**

**Proposal for Operating Model Changes in Mays Cluster**

Public Comment

# Criteria for Any Recommended Changes

January 2016-Present



# Proposal for Adamsville & Miles

## Recommendation:

Close Adamsville Primary; restructure Miles Intermediate as a PreK-5 school; redistrict some students to West Manor Elementary.

## Staff Impact:

Consistent with past practices with merged and closed schools, all staff will be required to apply, with interview priority status, for a position at a newly created school or elsewhere in the district

## Proposed Zoning:

As part of the proposed merger, students residing within the area east of I-285 would begin attending West Manor ES for 2017-2018. This area, encircled by Scott Street, includes Towne West Manor and London Town Houses.

## Adamsville Building:

Adamsville could be used as a swing space during West Manor's SPLOST renovations in 2020-21. Further ongoing community conversations needed.

# Adamsville/Miles Rationale for Proposal

The primary and intermediate split between Adamsville and Miles creates a lack of coherence in academic planning and programming.

- Opportunity to develop a K-5 school climate of excellence
- *Student* expectations, protocol, daily routines have to be reset in transition from 2<sup>nd</sup> to 3<sup>rd</sup> grade
- K-5 at one location will ease the transportation for families with more than one child
- Instructional planning is challenging when coordinating between two different staffs

All three schools – *Adamsville* (381), *Miles* (396) & *West Manor* (270) – are significantly under-enrolled. Both Miles and West Manor have sufficient capacity to accommodate students.

Adamsville students can now access Miles school based care center

- West Manor is currently scheduled for \$10 million in SPLOST for renovations for July 2020 – July 2021.
- Adamsville campus would potentially be used as a swing space for West Manor during renovations.
- Further, community conversations need to continue about proper use of building based on community needs.

# Adamsville/Miles Enrollment Projections

School	Current Enrollment	Planning Capacity (@22 students/room)	Projected New 2017-18 Enrollment
Adamsville Primary	381	660	Merged
Miles Intermediate	396	770	702
West Manor Elementary	270	352	321

Enrollment Projections for proposed merged school				
Grade	2017-18	2018-19	2019-20	2020-21
PK	44	44	44	44
K	119	114	122	111
1	103	118	113	121
2	87	102	117	112
3	95	89	104	119
4	123	98	92	108
5	131	124	99	93
<b>Total</b>	<b>702</b>	<b>689</b>	<b>691</b>	<b>708</b>

# West Manor Enrollment Projections

School	Current Enrollment	Planning Capacity (@22 students/room)	Projected New 2017-18 Enrollment
West Manor	270	352	311

Enrollment Projections for proposed merged school				
Grade	2017-18	2018-19	2019-20	2020-21
K	37	39	40	37
1	48	43	45	46
2	55	63	56	59
3	66	55	63	56
4	59	69	58	66
5	46	54	63	53
<b>Total</b>	<b>311</b>	<b>323</b>	<b>325</b>	<b>317</b>



# Program Planning

## New Merged School Estimates (@ Miles bldg.)

Projected PK-5 Enrollment  
702

Miles Bldg: 35 Classrooms

Miles Capacity @ 22/Class  
770

Core Teachers 27

Extended Core 4.6

KINDG Paraprofessional 5

Counselor (K-5) 1

Substitute Teachers \$11,600

Operating \$66,500

Flex \$85,300

Additional Flex \$52,600

Cluster \$35,000

Signature \$220,000

NOTE: Details on proposed focal points, extra curricular activities and additional instructional support details can be found on page 10 of the Mays FAQ.



# Focal Points

## Balanced Literacy

- + Instructional activities that develop phonemic awareness
- + Reading a variety of interest-based informational and literary texts
- + Building academic language to provide students access to complex concepts and ideas
- + Short Cycle Assessment Initiative (focus on skills such as main idea, story structure, etc.)

## Writing Across the Curriculum

- + Designated writing plan (introduction to the various forms of writing: Narrative, Informational, Opinion)
- + Writing from multiple sources
- + Students will integrate technology by responding to writing prompts on the computer

## Data & Technology Use

- + Integrate computer and internet technologies into literacy instruction
  - ▲ Ongoing classroom assessment; Instruction based on the diagnostic information obtained; Appropriate instructional intervention for children

## Extra Curricular Programs

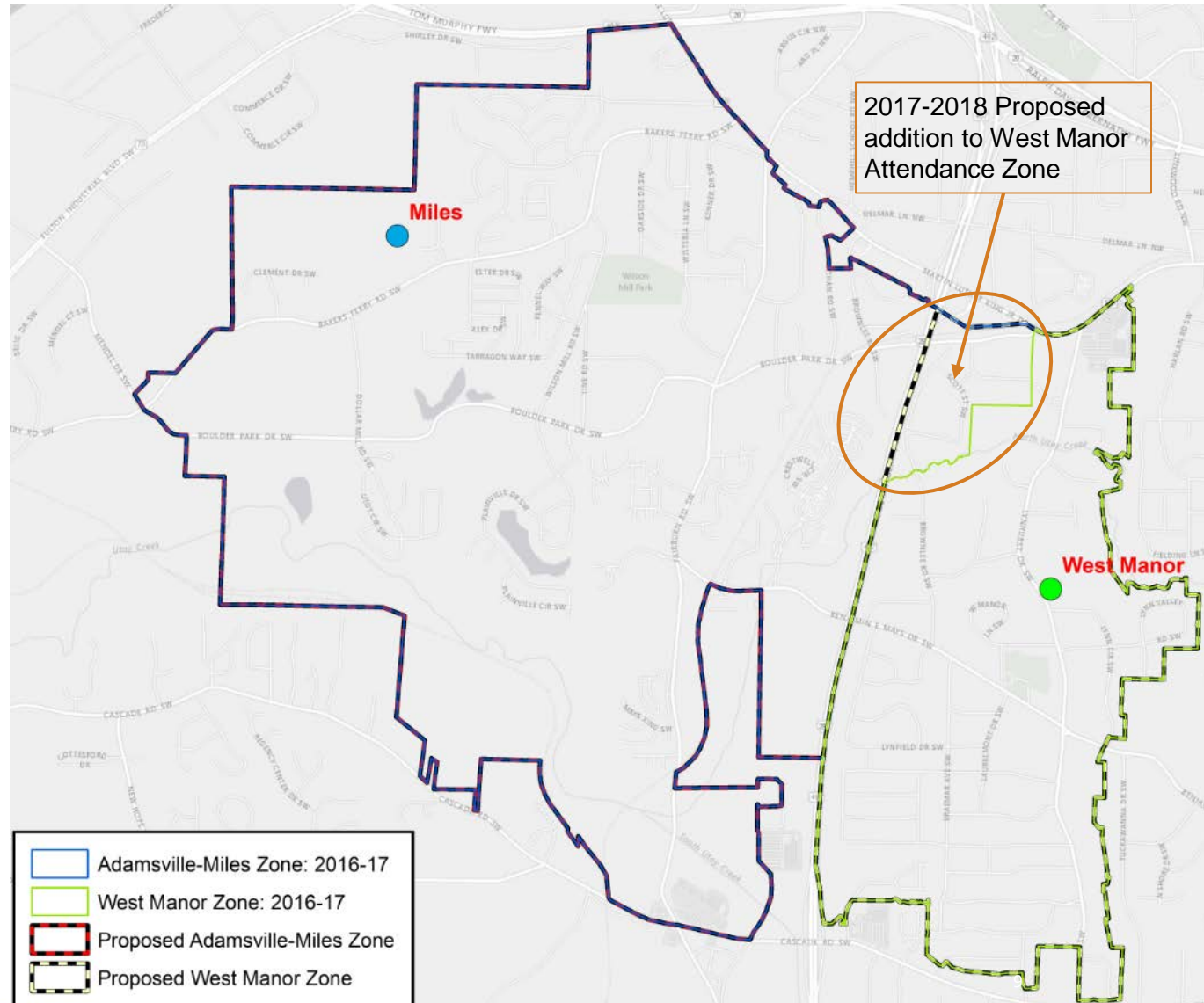
- Debate Team
- Chess Team
- Book Clubs
- Girls Mentoring Program
- Boy Scouts
- Dance Teams
- Orchestra
- Technology Club
- Challenge 24 Club
- Pep Squad\*
- Distinguished Gentlemen\*
- Tennis\*

\*Current programs at Adamsville Primary that would be continued at the new merged PreK-5 school.

# Adamsville/Miles Proposed Boundary Changes

As part of the proposed merger, students residing within the area east of I-285 would begin attending West Manor ES for 2017-2018. This area, encircled by Scott Street, includes Towne West Manor and London Town Houses.

West Manor is a smaller building where the additional 50 students rezoned will bring them close to max capacity.



# Mays Cluster Timeline

## Key Dates and Meetings

Jan. 12	Jan. 17	Jan. 26	Feb. 1	Feb. 23	March 6	March 7-10	March 6-24	April 1
Senior Cabinet leaders meet with Mays Cluster staff about operating changes	Lunch with Mays Community Leaders	Mays Cluster Community Meeting @ 6 p.m. at Mays HS, 3450 Benjamin E. Mays Drive SW	Mays Cluster Public Hearing @ 6 p.m. at Adamsville Primary, 286 Wilson Mill Road	Mays Cluster Public Hearing @ 6 p.m. at Miles, 4215 Bakers Ferry Road	Atlanta Board of Education community meeting 6 p.m. CLL	HR Team meets with staff at impacted schools.	Principal conducts interviews and hiring process.	All staff members will be notified of their employment status.

# Community Engagement

## Jackson Cluster

## Mays Cluster

## Douglass Cluster

Dec. – Jan.	Jan.	Jan. 12	Jan. 17	Jan. 17	Jan. 18	Jan. 23-25	Jan. 23	Jan. 25
Meetings with Douglass Cluster Steering Committee & various neighborhood groups	Senior Cabinet leaders meet with Douglass Cluster staff about proposed changes	Senior Cabinet leaders meet with Mays Cluster staff about school changes	Senior Cabinet leaders meet with Jackson Cluster staff about school changes	Lunch with Mays Community Leaders	Jackson Cluster Focus Group Meeting	Senior Cabinet leaders meet with Douglass Cluster staff about school changes	Jackson Cluster Community Meeting 6 p.m. Jackson HS	Douglass Cluster Community Meeting 6 p.m. Douglass HS

Jan. 26	Feb. 1	Feb. 6	Feb. 7	Feb. 7	Feb. 9	Feb. 8	Feb 14.	Feb. 15
Mays Cluster Community Meeting 6 p.m. Mays HS	Mays Cluster Public Hearing 6 p.m. Adamsville ES	Atlanta Board of Education community meeting 6 p.m. CLL	Jackson Cluster Focus Group Meeting	Douglass Cluster Community Visit & Tour of KIPP WAYS 8 a.m. – 9 a.m.	Douglass Cluster Community Meeting 6 p.m. CSK	Benteen Parent/ Caregiver Meeting Benteen ES	Douglass Cluster Community Visit & Tour of KIPP WAYS 8 a.m. – 9 a.m.	Jackson Cluster Public Hearing 6 p.m. Whitefoord ES

Feb. 22	Feb. 23	Feb. 27	Feb. 28	Mar. 1	Mar. 6
Douglass Cluster Public Hearing 6 p.m. BEST Academy	Mays Cluster Public Hearing 6 p.m. Miles ES	Douglass Cluster Public Hearing 6 p.m. CSK	Douglass Cluster Community Visit & Tour of KIPP WAYS 8 a.m. – 9 a.m.	Jackson Cluster Public Hearing 6 p.m. Benteen ES	Atlanta Board of Education community meeting 6 p.m. CLL

# Agenda

---

Welcome & Introductions

Purpose of Meeting

Proposal for Operating Model Changes in Mays Cluster

**Public Comment**

# Public Comment

The purpose of this Public Hearing is to receive public comment related to school mergers and closures. Please see the information below regarding the ground rules for public comment:

1. Stakeholders wishing to speak during a public hearing must sign up at least 10 minutes before the start of the hearing at the sign-in table.
2. Elected officials may request time to address the board by contacting the board office.
3. Each speaker shall be heard only once during the hearing. The board shall allocate one hour for public comment during public hearings.
4. Each speaker will be given up to two (2) minutes. At the end of the two-minute limit, individuals will be asked to end their comments and leave the podium. The board may elect to hear community comments in any order or sequence and is not limited by the arrangement shown on the sign-up sheets.
5. Community members presenting highly detailed or complex information are asked to provide a written outline of their comments for the board members.
6. In order to maintain appropriate meeting decorum, follow appropriate protocols, protect the confidentiality of students, and ensure the impartiality of the board, the board will not entertain comments on matters involving individual students, parents or the character, professional competence, or the physical or mental health of an individual. The board will not take public comment on personnel matters that specifically include the names or titles of employees; this includes but is not limited to: contract non renewals, position abolishment, the hiring or firing of staff, and investigative proceedings regarding allegations of misconduct. Communications regarding personnel issues should be sent in writing to: Atlanta Board of Education, 130 Trinity Ave, Atlanta, Georgia 30303 or via email at [boardcomments@atlantapublicschools.us](mailto:boardcomments@atlantapublicschools.us).
7. In-order to maintain proper meeting decorum. Applause, cheering, jeering, or speech that defames individuals, disrupts meeting progress will not be tolerated and may be cause for removal from the meeting or suspension and/or adjournment of the meeting by the board.

# Contact Information

- General Questions

Email: [externalaffairs@atlanta.k12.ga.us](mailto:externalaffairs@atlanta.k12.ga.us)

- District 5 Board Member Steven Lee

Email: [slee@atlanta.k12.ga.us](mailto:slee@atlanta.k12.ga.us)

- At-Large Seat 9 Board Member Jason F. Esteves

Email: [jesteves@atlanta.k12.ga.us](mailto:jesteves@atlanta.k12.ga.us)

- Superintendent Dr. Meria Carstarphen

Email: [suptoffice@atlanta.k12.ga.us](mailto:suptoffice@atlanta.k12.ga.us)





# APPENDIX





APS is

on a Journey of Transformation

# Mays Cluster Signature Program Implementation of International Baccalaureate (IB)

## Mays Cluster IB Program Phasing

Apply for Candidacy ★ Consultant Visit ◆ Apply for Authorization ● Verification Visit ◻ Program Evaluation Visit ▲

Program	FY17	FY18	FY19	FY20	FY21
Mays CP	Consideration ★	Candidate School	◆	● ◻	Authorized World School
Mays DP	Consideration	★	Candidate School	◆	● ◻
Young-Mays MYP	Consideration ★	Candidate School	◆	● ◻	Authorized World School
Miles PYP	Consideration ★	Candidate School	◆	● ◻	Authorized World School
Adamsville PYP	Candidate School	◆	● ◻	Authorized World School	
Beecher Hills PYP	▲	Authorized World School			
Cascade PYP	Candidate School	◆	● ◻	Authorized World School	
Peyton Forest PYP	Candidate School	◆	● ◻	Authorized World School	
West Manor PYP	Candidate School	◆	● ◻	Authorized World School	

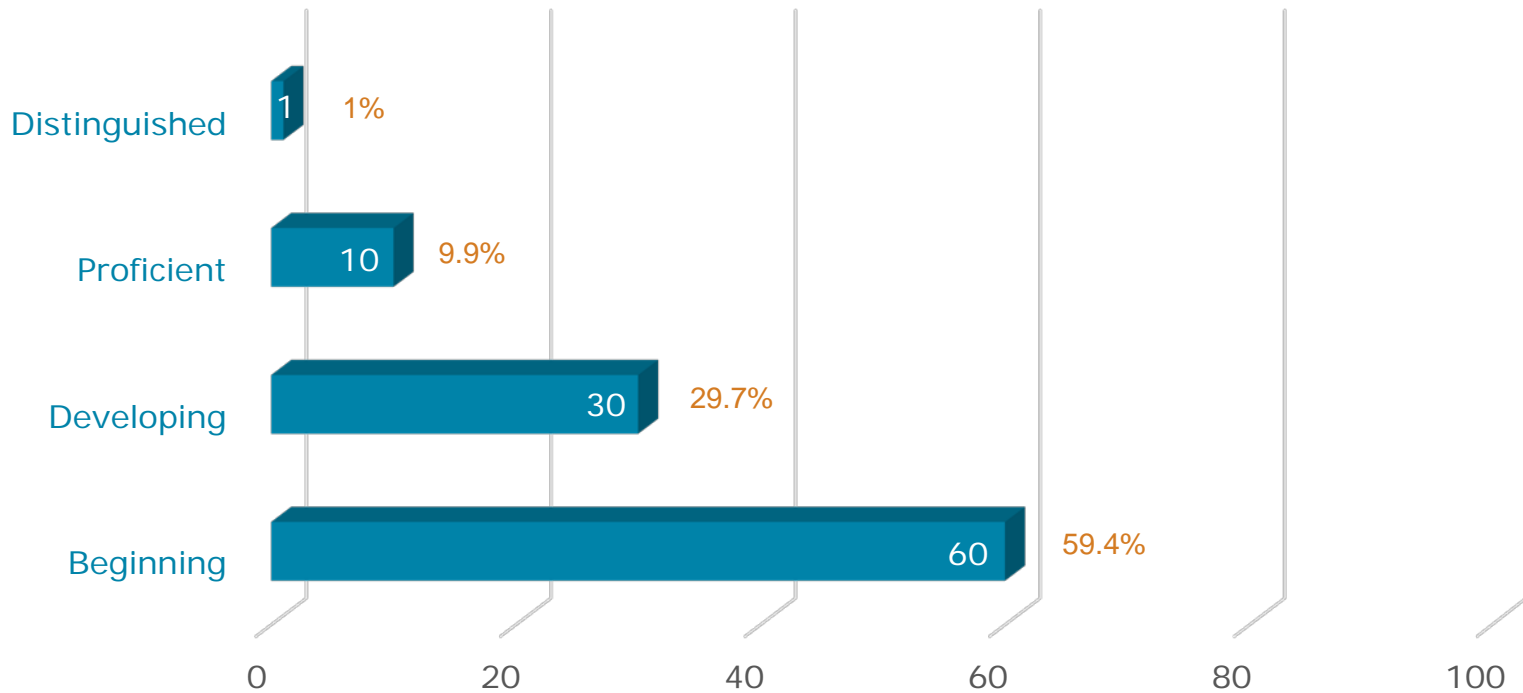
# Mays Cluster Performance – CCRPI \*

School	2014	2015	2016	Three- Year Average
West Manor	85.5	85.2	82.1	84.3
Beecher	63.3	82.2	61.8	69.1
Cascade	66.5	57.0	57.8	60.4
Miles	47.2	56.2	63.4	55.6
Peyton Forest	48.6	56.2	50.5	51.8
Young	53.7	55.9	50.2	53.3
Mays	54.7	67.4	62.1	61.4

Adamsville is not listed because the state does not provide CCRPI scores for primary schools. Primary schools do not take the Georgia Milestones Assessment.

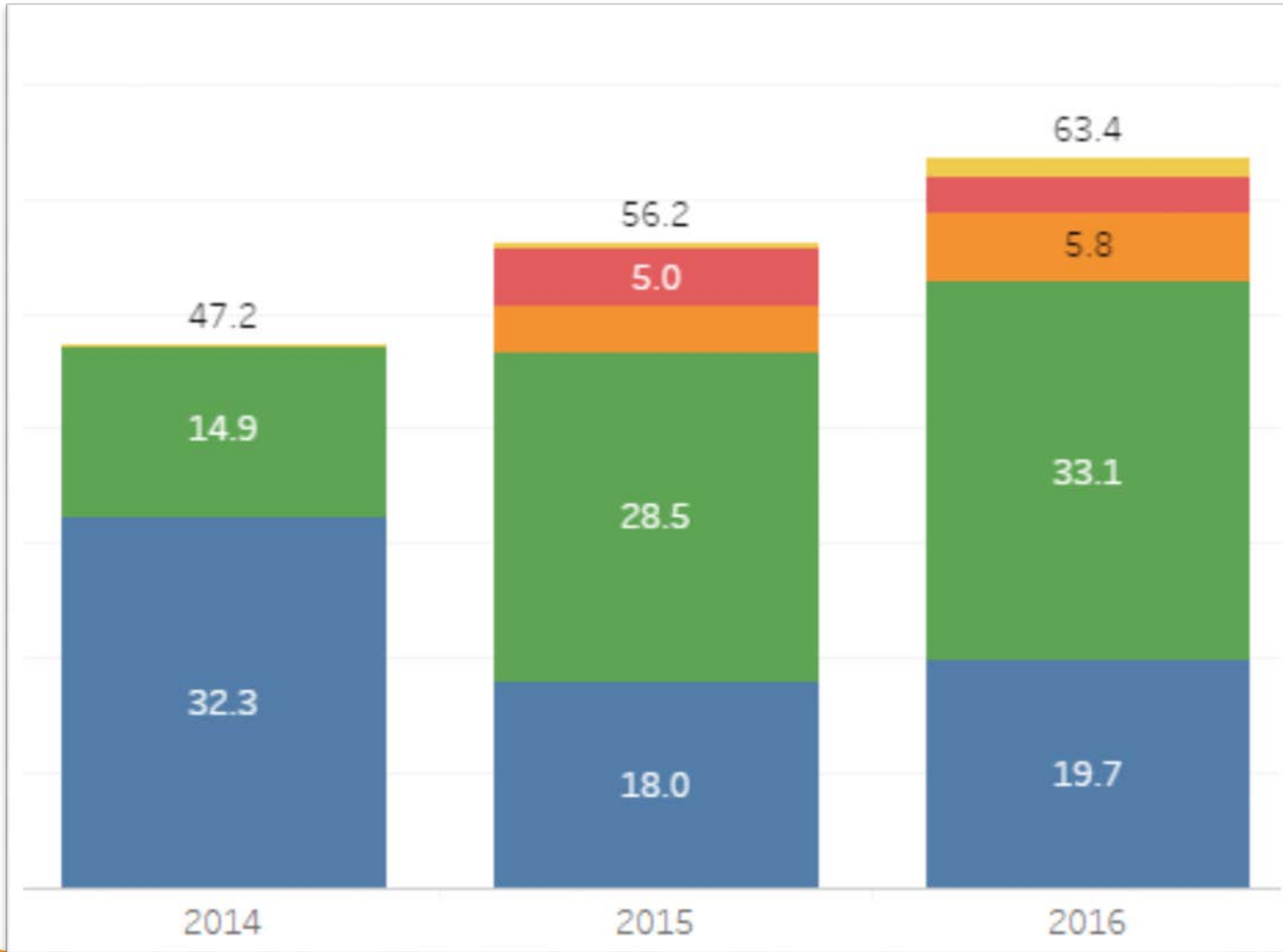
# Achievement Levels of Third Graders That Transitioned from Adamsville Primary to Miles Intermediate

## Fall 2016 Star Reading



**Data shows that only 1 in 10 third graders read at proficient level**

# Miles Intermediate CCRPI



Data shows that performance levels have increased over the last three years.

- Exceeding the Bar
- ED/EL/SWD Perform...
- Achievement Gap
- Progress
- Achievement

# Progress is being made within Mays Cluster, providing reason for optimism



CCRPI Success in Elementary Schools with West Manor ES leading the way



Miles Intermediate Achieving Gains to Come Off State-Takeover List



Two Five-Star Schools for Climate Ratings in Beecher (98.3) and Cascade (97.4) and two Four-Star Schools in Miles (93.1) and Peyton Forest (92.3)



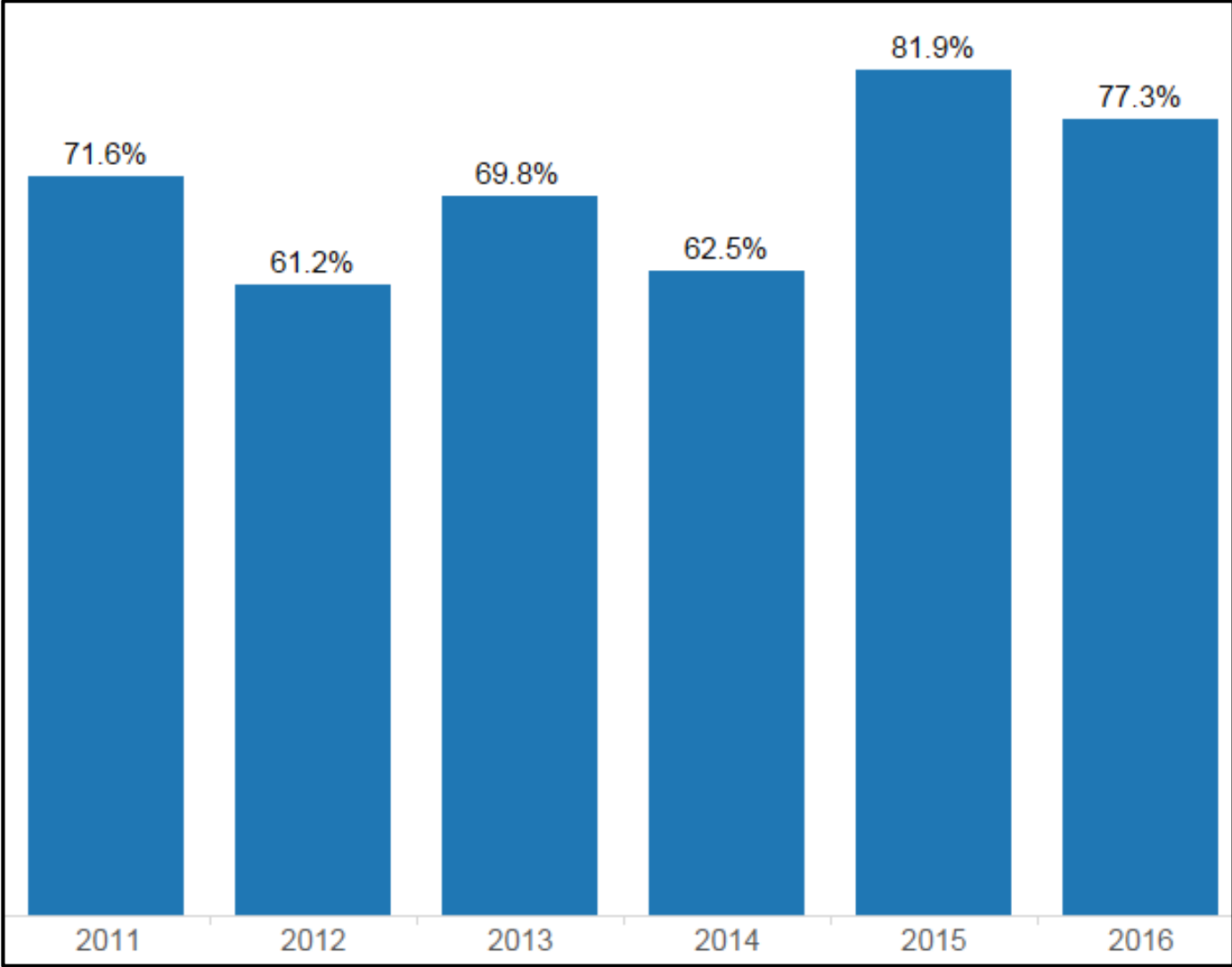
Extensive community engagement led to development of cluster plan and adoption of International Baccalaureate Signature Theme



Leadership Capacity Development with Rensselaerville Institute providing extensive principal turnaround coaching at Adamsville, Peyton Forest, Miles and Young



# Mays Cluster Graduation Rates



# Staffing Allotments

## Miles Merged School

- + 12 Core Teachers
- + 1.6 Extended Core
- + 5 Paraprofessionals
- + .5 Counselors
- + \$5,000 Substitutes
- + \$28,500 Operating
- + \$22,500 Flex Funds

Gifted, EIP, ESOL, Special Ed, Nurse, Psychologist, and SSW may also increase, but we are awaiting exact allotments.

## West Manor

- + 1 Core Teachers
- + \$850 Substitutes
- + \$5,000 Operating
- + \$4,000 Flex Funds

Gifted, EIP, ESOL, Special Ed, Nurse, Psychologist, and SSW may also increase, but we are awaiting exact allotments.

Note: Class sizes are not expected to change with mergers

# Addressing Vacant Properties/Buildings

- ❖ The Board and Administration are committed to working with the community to identify appropriate uses for vacant buildings by repurposing some of its surplus properties for residential and non-residential development.
- ❖ Taskforce was named on January 9, 2017 at the Atlanta Board of Education Meeting to examine APS vacant buildings and parcels to support affordable housing.
  - Charged with bringing recommendations to the Superintendent for consideration by June 2017
  - The Taskforce's first meeting was on February 2, 2017 and the group has decided to meet at least monthly between now and June 2017
- ❖ Superintendent/Administration will continue to work on scenarios/options proposed by the Taskforce (including those unrelated to potential affordable housing efforts) for potential board action in fall 2017
  - It is their collective goal to provide a recommendation to the Board and Superintendent on what the is the best and highest use of the district's surplus properties – especially those that can be used to provide affordable housing options.
- ❖ \$2-5 million in SPLOST is earmarked for management of vacant and dilapidated buildings
- ❖ Buildings are often used for swing space, which will be needed for recently voter approved SPLOST implementation

# Enrollment Projections Data Sources/Process:

## ➤ BASE: Current FTE-1 Enrollment

- Enrollment numbers can change daily so we baseline current enrollment numbers with the FTE-1 Enrollment numbers. These numbers can be found on the Georgia Department of Education website

## ➤ Analyze historic trends by school and grade

## ➤ Analyze U.S. Census data on different age groups

## ➤ Review new residential & non-residential\* permits issued by city; estimate impact on schools

## ➤ Consider approved administrative transfers

## ➤ Review grandfathering decisions due to rezoning

## ➤ Compare FTE-1 (October) and FTE-3 (March) to look for schools that gain or lose significant number of students during the school year.

NOTE: The enrollment projections that can be found online in the '2015 Facility Condition Assessment Report' were done 2013. The models get recalibrated after FTE-1 numbers are available. We have had three FTE-1 counts since those projections and what you are seeing now are the updated projections.

*\*Non-Residential Permits can include new transportation locations, shopping centers, new locations that offer employment, etc.*

# Naming and Renaming of APS Facilities

The Atlanta Board of Education recognizes that the selection of a name for a facility is a vital component of its public image and will ensure that the name selected will reflect honorably on APS and the community.

## **5- 7 Committee Members:**

- ✓ Board Member
- ✓ City Council Representative
- ✓ 3-5 from groups such as:
  - Neighborhood Planning Unit
  - School or District Administration
  - School or Cluster parent groups

Consideration will be given to names of local communities, neighborhoods, streets, landmarks, and individuals who have made a significant contribution.

Nominations will be accepted by the committee from individuals, organizations or board members.

The name recommended will not duplicate, cause confusion, or otherwise conflict with the names of existing facilities in the school system.

In the event a compelling reason to do so arises, any restrictions herein set forth may be waived by a unanimous vote of the board.

Names of individuals will be considered only after they have been deceased for five years.